

DEC 13 2019

Corners to be Indexed

E1/4 21-106-41

STATE OF MINNESOTA, }
COUNTY OF MURRAY, } ss.

I hereby certify that the within Instrument was filed in this office for record on the 13TH day of DECEMBER A.D. 20 19 at 9:00 o'clock A. M. and was duly recorded as Document No. _____

I hereby certify that this document and the data contained herein was prepared by me or under my direct supervision.

Daniel L. Bueltel

License No. 43844

Aug 14, 2019
Date

Evelyn C. Larson
County Recorder

CERTIFICATE OF LOCATION OF GOVERNMENT CORNER

Land survey monuments situated in Section 21, Township 106, Range 41, 5TH P.M.

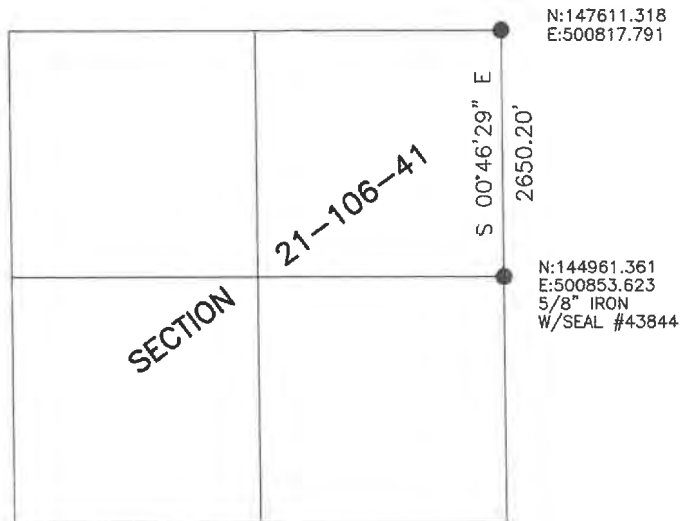
STATE OF MINNESOTA, County of MURRAY

STATEMENT OF EVIDENCE:

- 1861 - Original Government Survey
- 1897 - J.W. Woolstiencroft set cedar post at the corner.
- 2005 - Zieske Land Surveying found 1.5" pipe and set pipe w/seal #43803 over it.



- FOUND MONUMENT
- SET MONUMENT



Minnesota State Plane Coordinate
System Murray County Datum NAD83 (1996)

Statement of Evidence

E1/4 21-106-41

In 1861, L.G.M. Fletcher did the original subdivision of the township.

On June 30, 1897, J.W. Woolstiencroft set a cedar post at the corner.

On November 9, 2005, Zieske Land Surveying found a 1.5" pipe at the corner. They set a 1" pipe with seal #43803 over it.

On June 17, 2015, the Murray County Highway Department found nothing at the corner.

On August 13, 2019, Bueltel-Moseng Land Surveying searched for the corner and found nothing. We set a 5/8" iron with seal #43844 using the coordinates from the corner certificate from 2005.